



## Wellington Northern Corridor



### Ōtaki to north of Levin expressway

Update  
August 2011

# What's happening?

The NZ Transport Agency (NZTA) is continuing our preliminary work on improvements to the section of State Highway 1 from north Ōtaki to north of Levin.

This is part of the Wellington Northern Corridor, one of seven roads of national significance across New Zealand. As part of the Ōtaki to Levin project, we aim to build a four-lane expressway between Ōtaki and Levin, an alternative route for Levin and improvements to State Highway 1 to the north of Levin.

One of the first steps is for the Ōtaki to Levin project team to identify constraints to help choose a possible route for an expressway between Taylor's Road and the Manawatu River Bridge.



Lake Horowhenua



SH1 south of Levin

## The ACRE process

ACRE is a four step process to help identify the exact route alignment and land requirement for a new road. The project moves progressively from Area through to Easement over the study timeline.

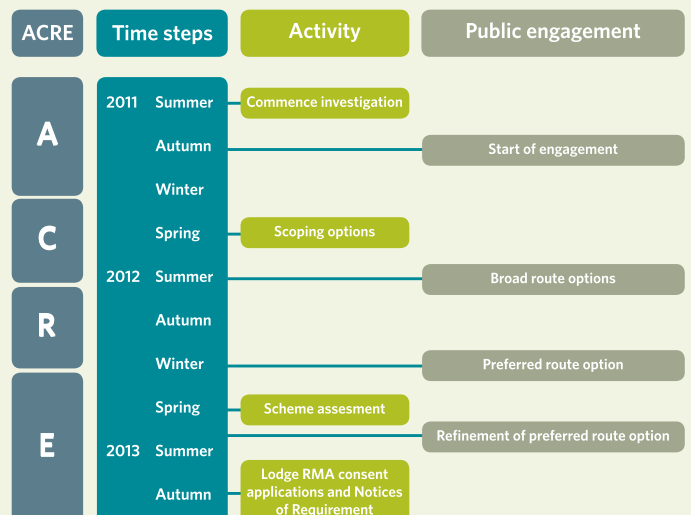
**Area** - Identify the study area and collect data to identify the constraints within it.

**Corridor** - Identify study corridors within which the route will be selected.

**Route** - Identify possible routes within corridors. Public consultation on route options.

**Easement** - Identify the route centre line and land requirement. Ongoing consultation to refine route.

## Project timeline



## What is a constraint?

A constraint is a factor that we need to consider when scoping possible routes. Something may be seen as a constraint for many reasons, including heritage, tangata whenua, ecology, landscape, hazards, land ownership and land use. All these factors will inform the project team and stakeholders in identifying possible expressway route options.

It's important that we identify all constraints during the early stages of the project. Once we know and understand what they are, the team will be able to identify potential routes for the expressway and come back to the community for feedback on them.

## How have we identified the constraints?

We have worked closely with key groups such as Horowhenua and Kāpiti Coast District Councils, Horizons and Greater Wellington Regional Councils, Historic Places Trust, the Department of Conservation and tangata whenua.

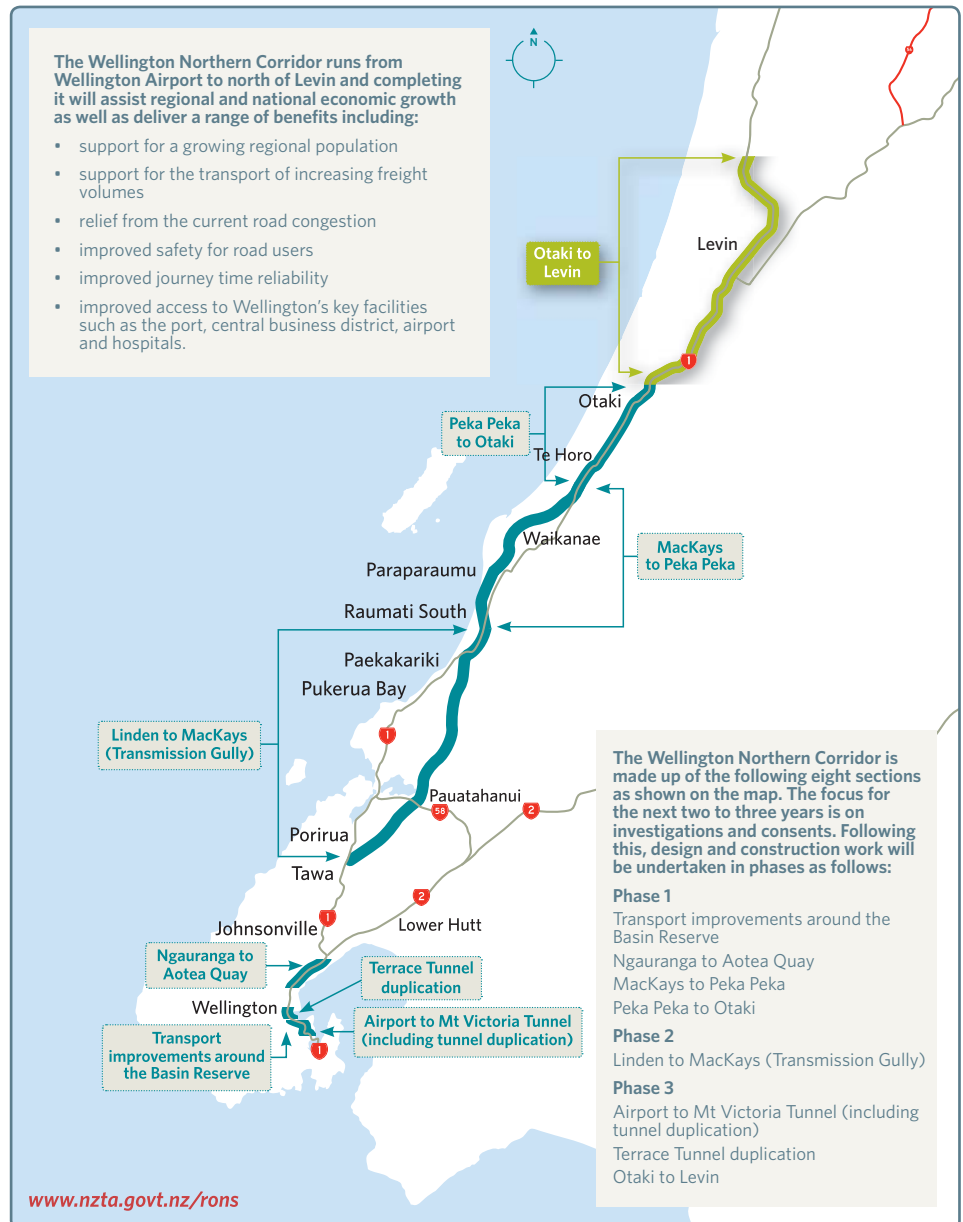
You can see the constraints identified so far by visiting [www.nzta.govt.nz/otaki-levin-project](http://www.nzta.govt.nz/otaki-levin-project).

## What happens next?

If you have any comments on the constraints identified so far, please let us know using the contact details below by 23 September 2011.

Once we have identified all constraints, we will develop broad possible route options and put them out to the community for feedback in early 2012.

## Wellington Northern Corridor



## Your feedback

Your feedback is important in identifying all possible constraints on the north Ōtaki to north of Levin section. If you think we have missed anything, please tell us.

You can tell us what you think via:

Email: [info@O2L.co.nz](mailto:info@O2L.co.nz)

Post: **The Ōtaki to Levin team, PO Box 5084, Wellington 6145**

Phone: **04 894 5418**

You can also visit the project website on [www.nzta.govt.nz/otaki-levin-project](http://www.nzta.govt.nz/otaki-levin-project)

**Please give us any feedback by Friday 23 September 2011**